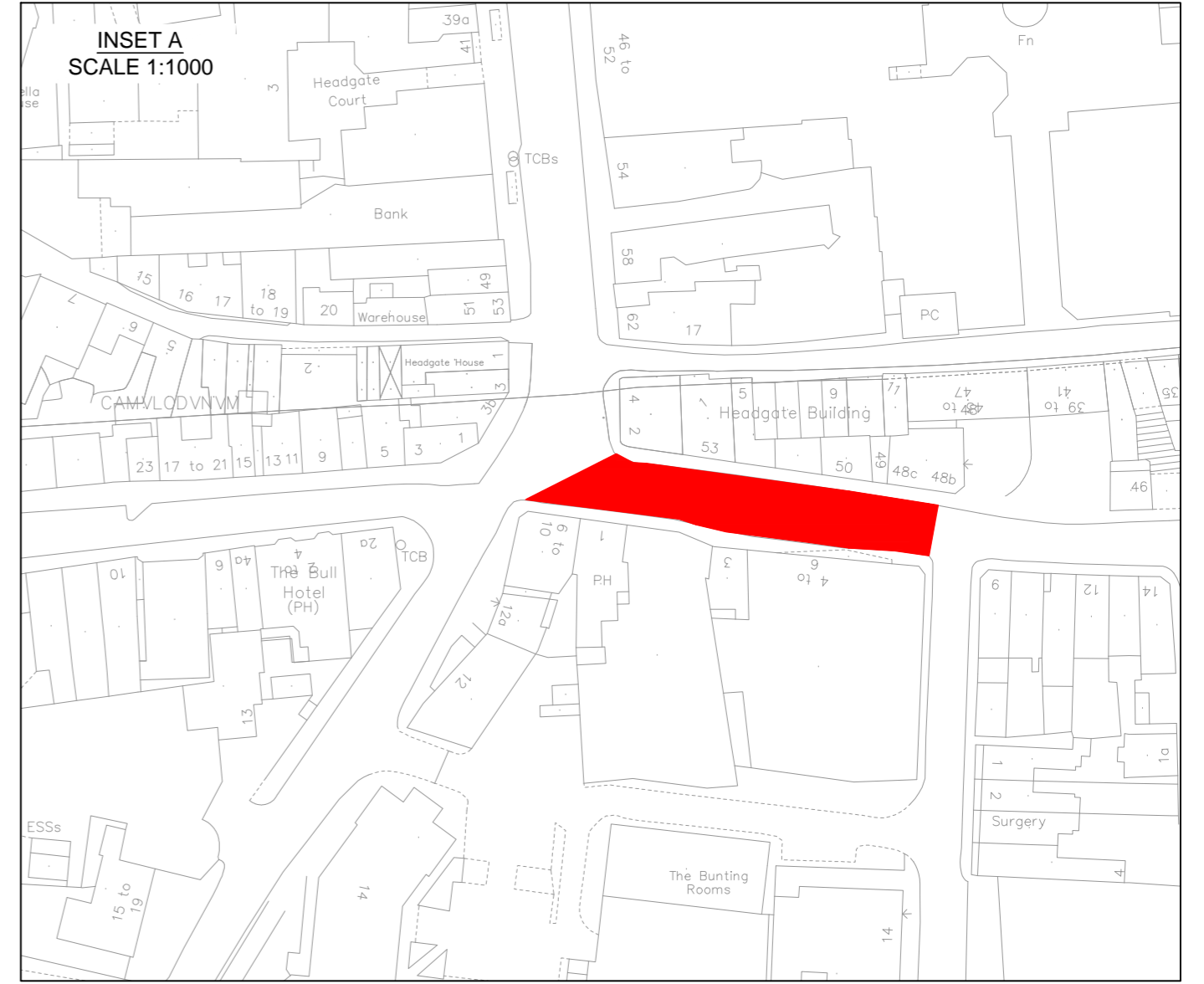
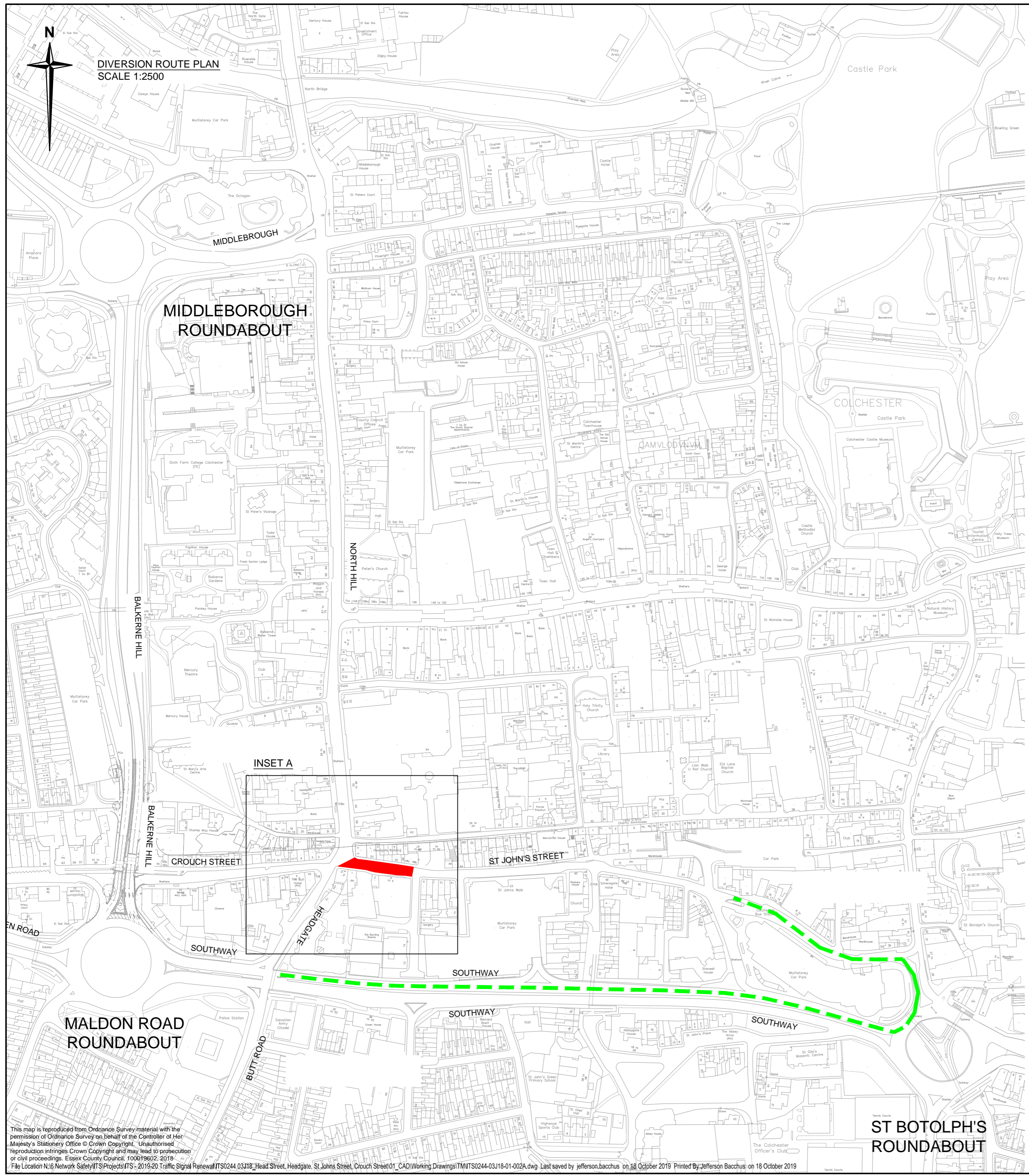






DIVERSION ROUTE PLAN
SCALE 1:2500



Key

-  Proposed road closure
-  Proposed diversion route

Notes

1. Not to scale.

This map is reproduced from Ordnance Survey material with the permission of Ordnance Survey on behalf of the Controller of Her Majesty's Stationery Office © Crown Copyright. Unauthorised reproduction infringes Crown Copyright and may lead to prosecution or civil proceedings. Essex County Council, 100019602-2019. File Location N:\Network Safety\ITS-2019-20-Traffic Signal Renewal\ITS0244_03J18_Head Street, Headgate, St John's Street, Crouch Street\1_CAD\Working Drawings\TMTS0244-03J18-01-002A.dwg Last saved by jefferson.bacchus on 18 October 2019 Printed By Jefferson Bacchus on 18 October 2019