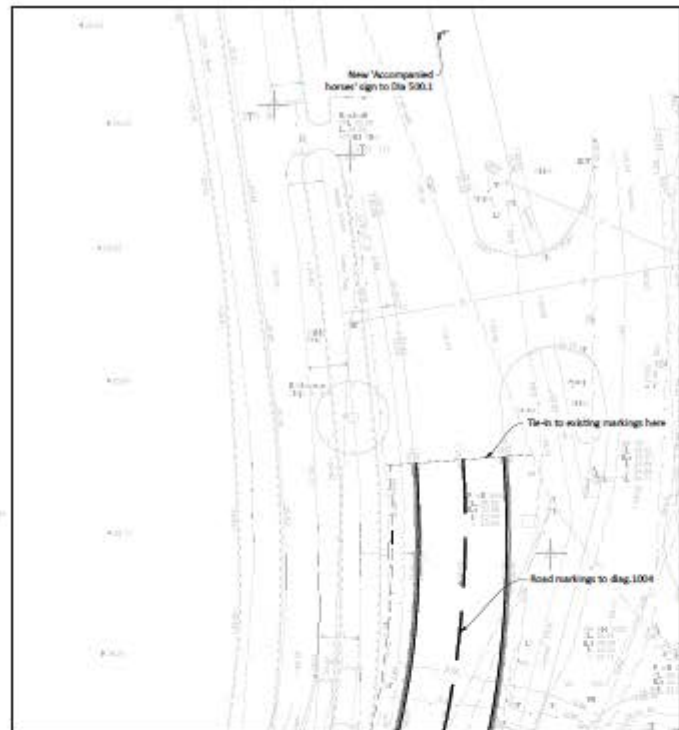


SEE INSET FOR CONTINUATION



Solar powered bollard with blank face

Shp. Illustrated 'vehicular traffic road proceed in direction indicated by arrow' sign to diag. 606 (1000mm) with 'Sharp deviation of route' chevron sign to Diag. 515 (600mm x 1200mm). To face traffic on each approach. (Post foundation details etc)

Sign 1 -
Refer to drawing H1489-18-02-1248 for details

Bollard to show keep left arrow to Diag. 602

Sign 2 -
Refer to drawing H1489-18-02-1248 for details

Bollard to show keep left arrow to Diag. 602

Solar powered bollard with blank face

Sign 4 -
Refer to drawing H1489-18-02-1248 for details

Sign 3 -
Refer to drawing H1489-18-02-1248 for details

Sign 6 - To Diag. 607
Refer to drawing H1489-18-02-1248 for details

New 'no entry' sign to diag. 616 & Road sign to diag. 3004

Existing 'No Entry' signs to be retained

New 'no entry' sign to diag. 510 to be mounted onto existing post

