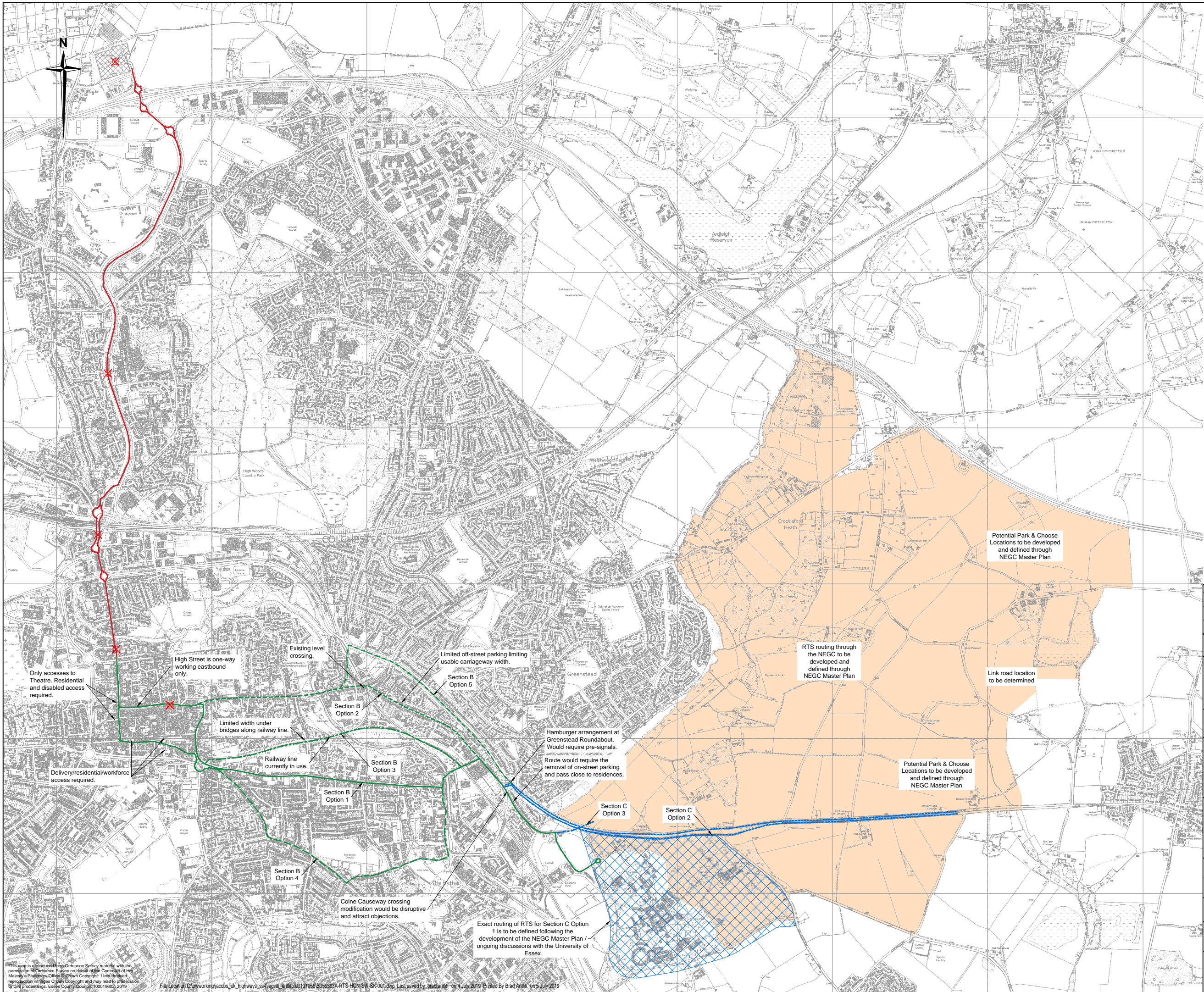


Appendix A – Stage 1 Options Drawing – B355363A-RTS-HGN-SW-SK-001B



- Notes**
- Do not scale.
 - Indicative layouts based on Ordnance Survey data only. Topographical surveys to be undertaken at a later design stage.
 - Routes and options shown are an overview only, with no certainty as to feasibility of implementation. Therefore, this plan is not for public distribution.
 - RTS stop locations for Section B & C to be determined.

- Key**
- Section A
 - Section B - Option 1
 - Section B - Option 2
 - Section B - Option 3
 - Section B - Option 4
 - Section B - Option 5
 - Section C - Option 1
 - Section C - Option 2
 - Section C - Option 3
 - Section C - Option 4
 - Provisional RTS stop location for Section A and High Street Only
 - Existing Colchester Park & Ride location

Rev	Date	Description of revision	Drawn	Checked	Reviewed	Approved
B	07/19	Revisions to routes and additional information	BA	PN	PN	PK
A	06/19	Revisions to routes and additional information	BA	PN	PN	PK

DRAWING STATUS

FOR INFORMATION

Essex Highways, Seax House, Victoria Road South, Chelmsford, CM1 1QH.
Tel: 0345 6037631 © Essex County Council

NORTH ESSEX RAPID TRANSIT SYSTEM

STAGE 1 OPTIONS

DESIGNED	DRAWN	CHECKED	REVIEWED	APPROVED
BA	BA	PN	PN	PK
DATE	DATE	DATE	DATE	DATE
JUN 19	JUN 19	JUN 19	JUN 19	JUN 19

DRAWING UNITS UNITS: DIMENSIONS IN MILLIMETRES LEVELS IN METRES SCALE AT A1 (841x594mm) NTS

DRAWING No: **B355363A-RTS-HGN-SW-SK-001** REV: **B**



This plan is reproduced from Ordnance Survey material with the permission of Ordnance Survey on behalf of the Controller of Her Majesty's Stationery Office. © Crown Copyright. Unauthorised reproduction in any form is prohibited. Any use of this plan in proceedings, Essex County Council, 100019602, 2019.

File Location: C:\working\jacobs_uk_highways_ssa\egpnt_1\1056\B355363A-RTS-HGN-SW-SK-001.dwg. Last saved by: tradant on 4 July 2019. Printed By: Brad Ansell on 5 July 2019.