



Chelmsford North East Bypass and Beaulieu Station

A transformational road and rail upgrade



Scheme Background

Detailed plans for a new railway station and bypass to support growth to the north of Chelmsford have been explored for over a decade. In 2007, Essex County Council and its partners laid out a long-term plan for Chelmsford North East Bypass and 'safeguarded' the land needed.

Chelmsford City Council's adopted Local Plan and the emerging Braintree Local Plan make provision for significant housing and development growth in the Chelmsford to Braintree corridor.

This includes the new Chelmsford Garden Community in North East Chelmsford and sites at Broomfield and Great Leighs.

The bypass and new railway unlocks 9,000 new homes in this corridor in the period up to 2036 and provides the potential for a further 5,000 new homes in the longer term.

In 2019, Essex County Council, with its partners, successfully bid for the Chelmsford North East Bypass and Beaulieu Railway Station as a joint project for the Government's Housing Infrastructure Fund. The fund designed to support those developments reliant on large scale infrastructure provision.

Following an Examination in Public in December 2018 the Chelmsford Local Plan proposals were found sound by the Inspector in 2019. They were formally adopted by Chelmsford City Council in May 2020.



The Chelmsford North East Bypass and Beaulieu Station road and rail upgrade will deliver a major economic boost to Chelmsford City and Essex.

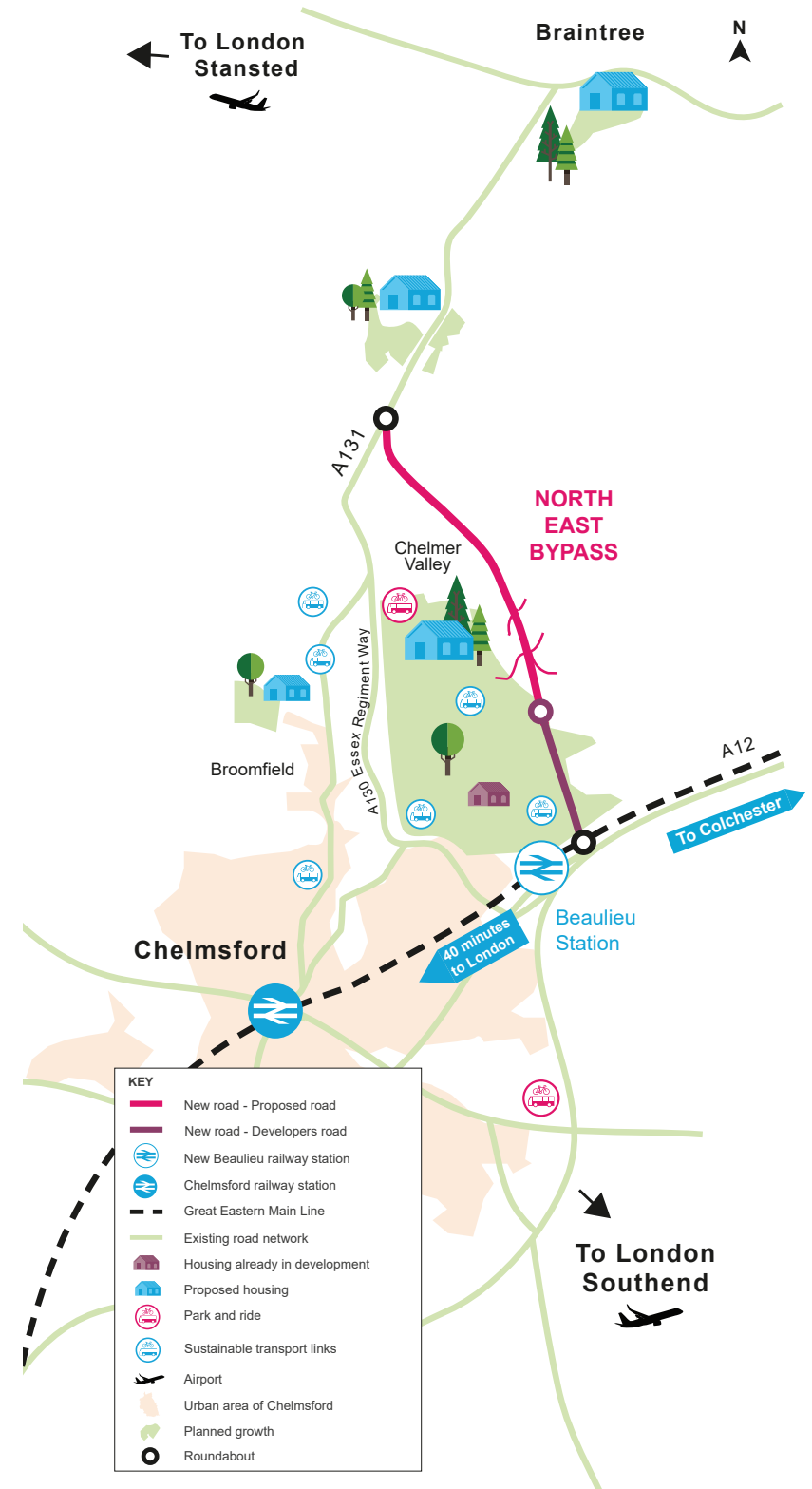
Essex County Council is delighted to have been awarded nearly £218m funding from the Government's Housing Infrastructure Fund, plus £34m of funding from the South East Local Enterprise Partnership and developers Countryside Zest.

The new 8km bypass will provide a missing link to the wider strategic network, helping to relieve the high level of traffic congestion in Chelmsford and enabling existing routes into the city centre to become sustainable transport corridors.

Beaulieu Station will provide an important transport interchange that will encourage more sustainable travel options.



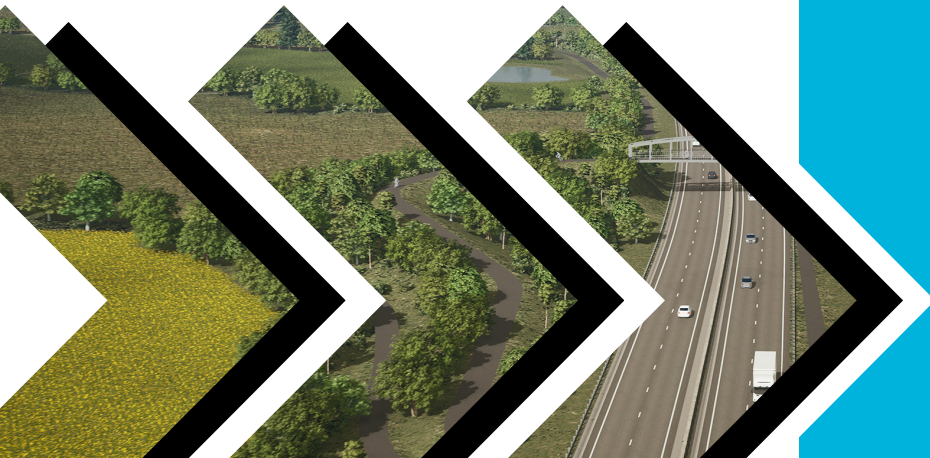
Chelmsford North East Bypass and Beaulieu Station



- Enable the 7,000 commuters who travel to Chelmsford from the Braintree area to get to work more quickly.
- Provide a strategic link between Chelmsford, Braintree, London Stansted Airport and the wider area.
- Relieve congestion on local roads and enable existing routes into Chelmsford city centre, such as Broomfield Road and Essex Regiment Way to become sustainable transport corridors.

What the bypass will do

- Provide easier access to the A12.
- Make accessing the new Beaulieu station a more attractive offer, reducing the need to travel into Chelmsford City Centre. This will take 900 vehicles out of the city centre each morning peak, helping reduce pressure on the network, which currently only has 4% capacity at peak times.
- In conjunction with the station, the bypass supports the sustainable delivery of over 14,000 new homes, all with excellent choice and connectivity to a wide range of jobs, amenities and transport modes.



Phase 1

- Online dualling of the existing A131 Braintree Road between Deres Bridge and a new roundabout at Chatham Green.
- New single carriageway connects to the Beaulieu Park Radial Distributor Road (RDR1) currently under construction.
- Intermediate roundabout for future connection into the Chelmsford Garden Community (CGC) and second distributor road (RDR2).
- Construction of new roundabout at Chatham Green and CGC RDR2 junction.

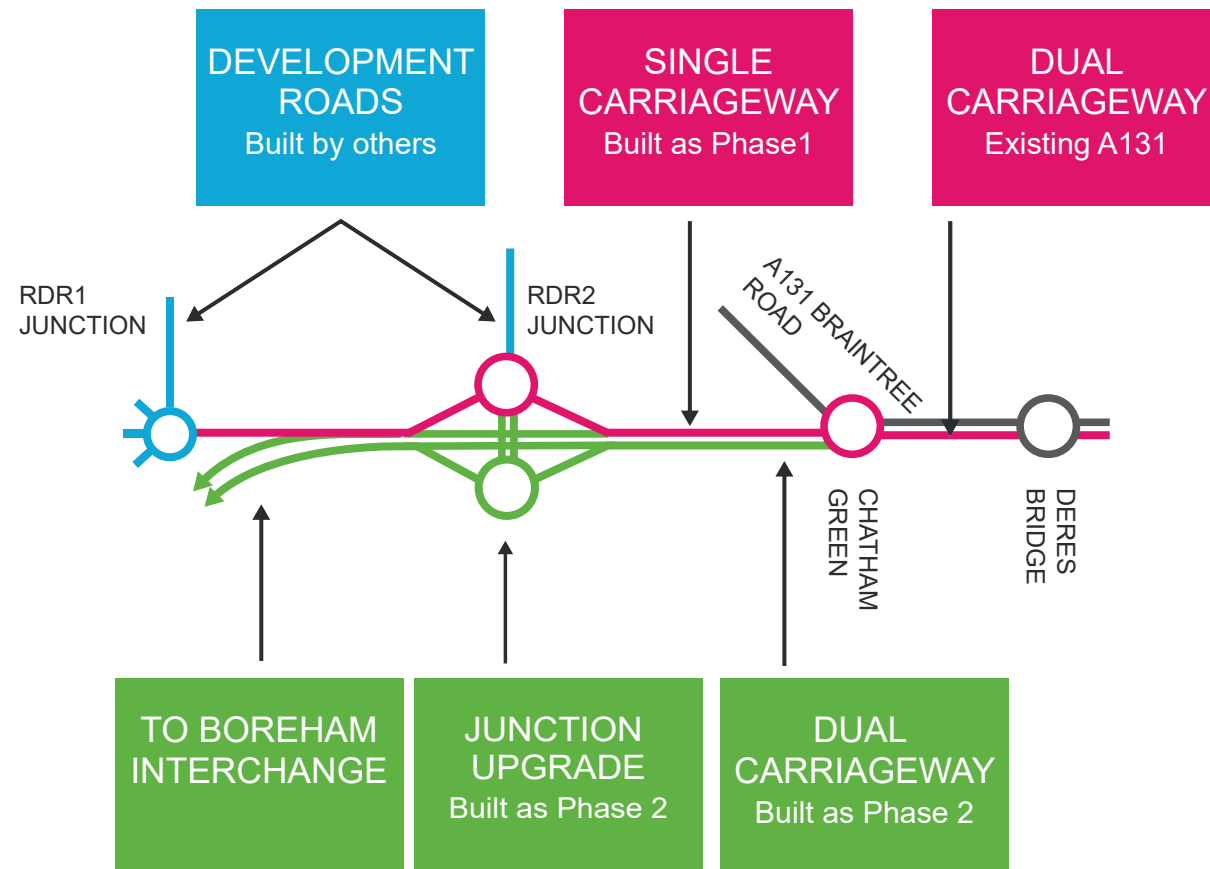
How the bypass will be delivered



Phase 2

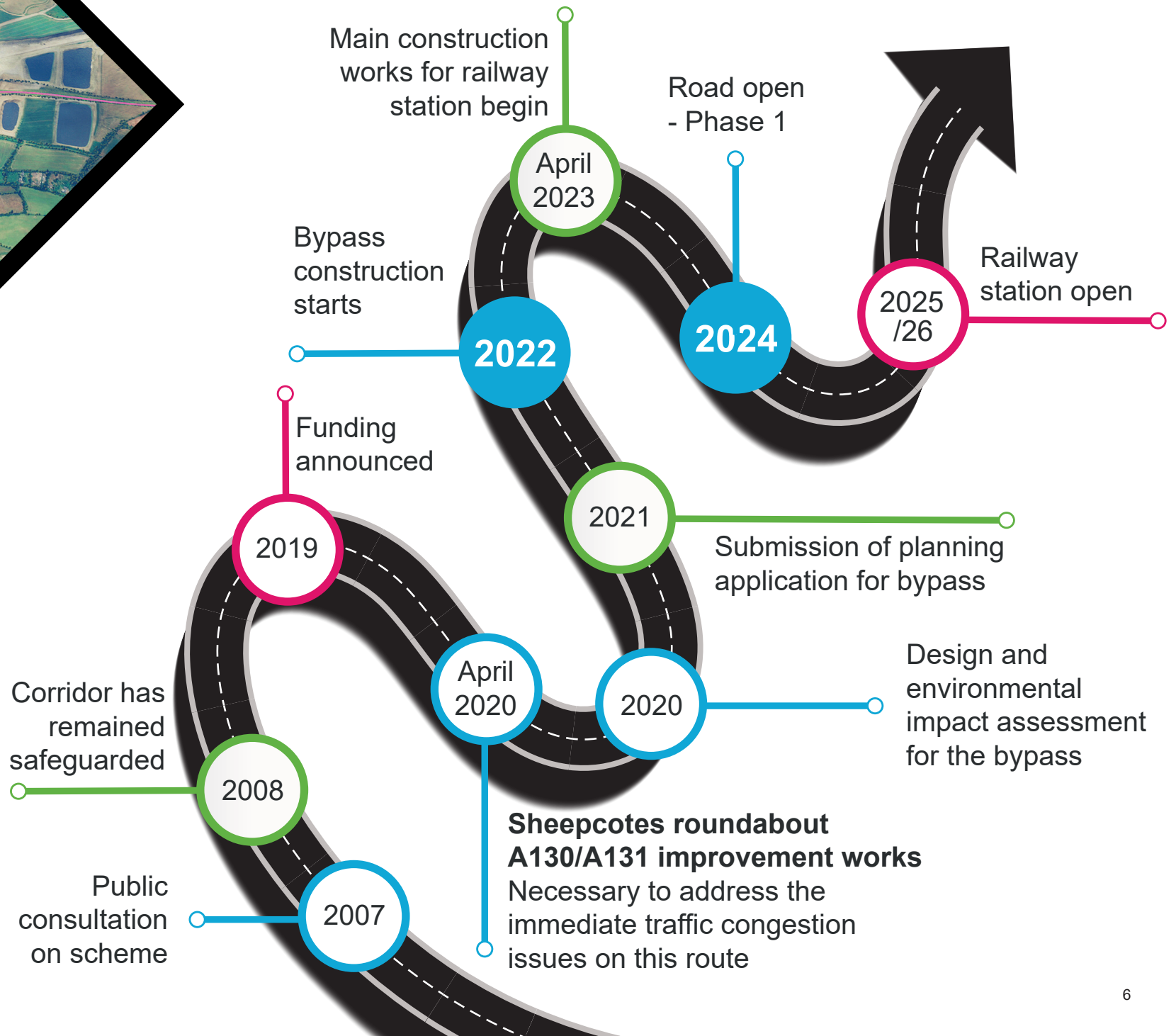
(future work - not part of this engagement)

- Future creation of the southbound dual carriageway created by adding additional southbound carriageway.
- Chelmsford Garden Community junction upgraded and expanded creating slip roads with new dual carriageway below.
- Extended dual carriageway towards the A12 at Boreham Interchange with an additional new junction near Beaulieu Station.





Scheme timeline





Beaulieu Station

Key Benefits



Reducing pressure

The new Beaulieu railway station, on the Great Eastern Main Line (GEML) between London to Norwich, will reduce pressure on the existing Chelmsford and Witham railway stations. The new three platform station located adjacent to the new bypass will provide services to London in just 40 minutes.

Easing congestion

The creation of the new bypass will enable traffic to access the A12 more easily, helping ease congestion on Chelmsford's local road network. The creation of a new train station will further help to ease this pressure by reducing the need for people commuting into London to travel into Chelmsford by car – an estimated 900 car journeys will be removed during each morning peak. For those travelling by road from the north of Chelmsford, the new station will be reached 12 minutes quicker (via the bypass) than Chelmsford Station.

Safer, Greener and Healthier routes

Chelmsford has the busiest two station platform in the UK, outside of London. Reducing pressure by encouraging those travelling from the north and east to use Beaulieu Station: will mean journeys will be quicker and safer for all by relieving congestion in Chelmsford's passageways and staircases. Pedestrian delays are expected to fall by 17%.

Improving reliability

The creation of a passing loop will mean that trains will be able to pass each other at the station to improve reliability of the whole GEML.

Supporting sustainability

Alongside the station, a transport interchange will connect to new and existing bus, footway and cycling networks, encouraging sustainable travel to the station and for onward travel. Charging points for electric vehicles will be provided, promoting greener use of the road network.

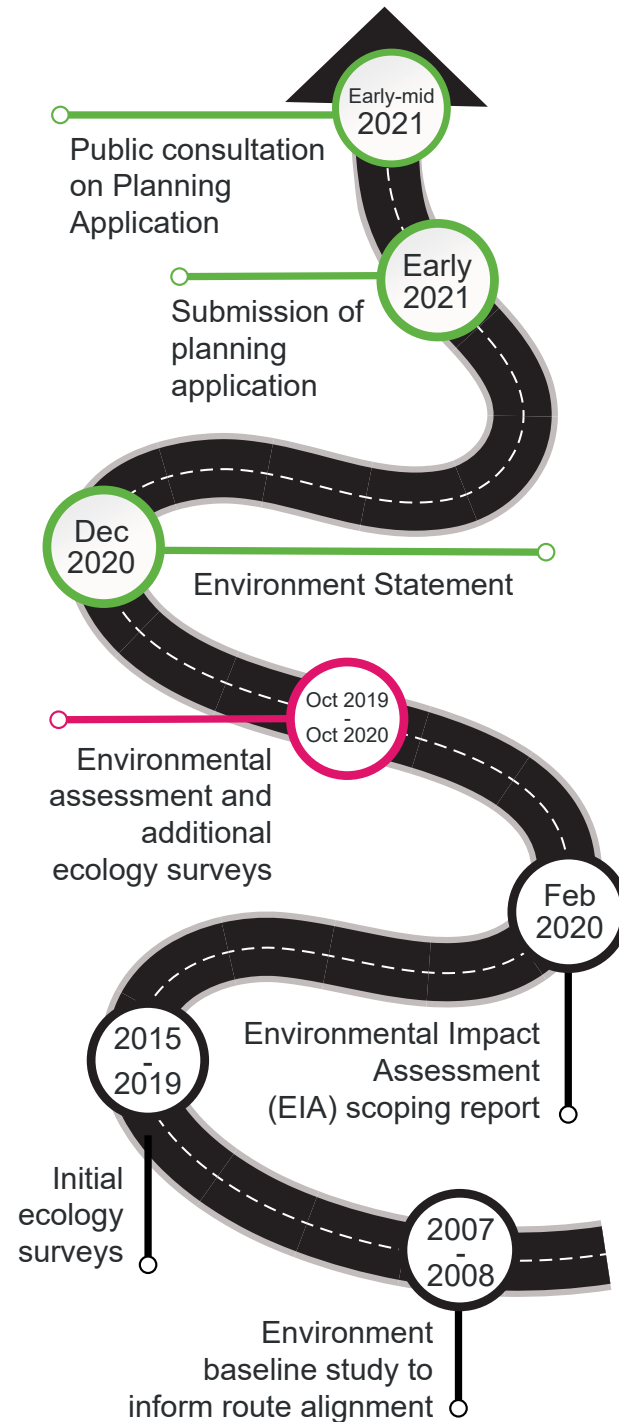
Economic boost

The station will support an estimated 2,500 additional jobs and generate in the region of £250m economic boost to the local area once fully constructed and operational.

Protecting the environment

We are committed to minimising the environmental impacts of the proposed bypass scheme.

Please see the following timeline outlining the environment assessment stages.



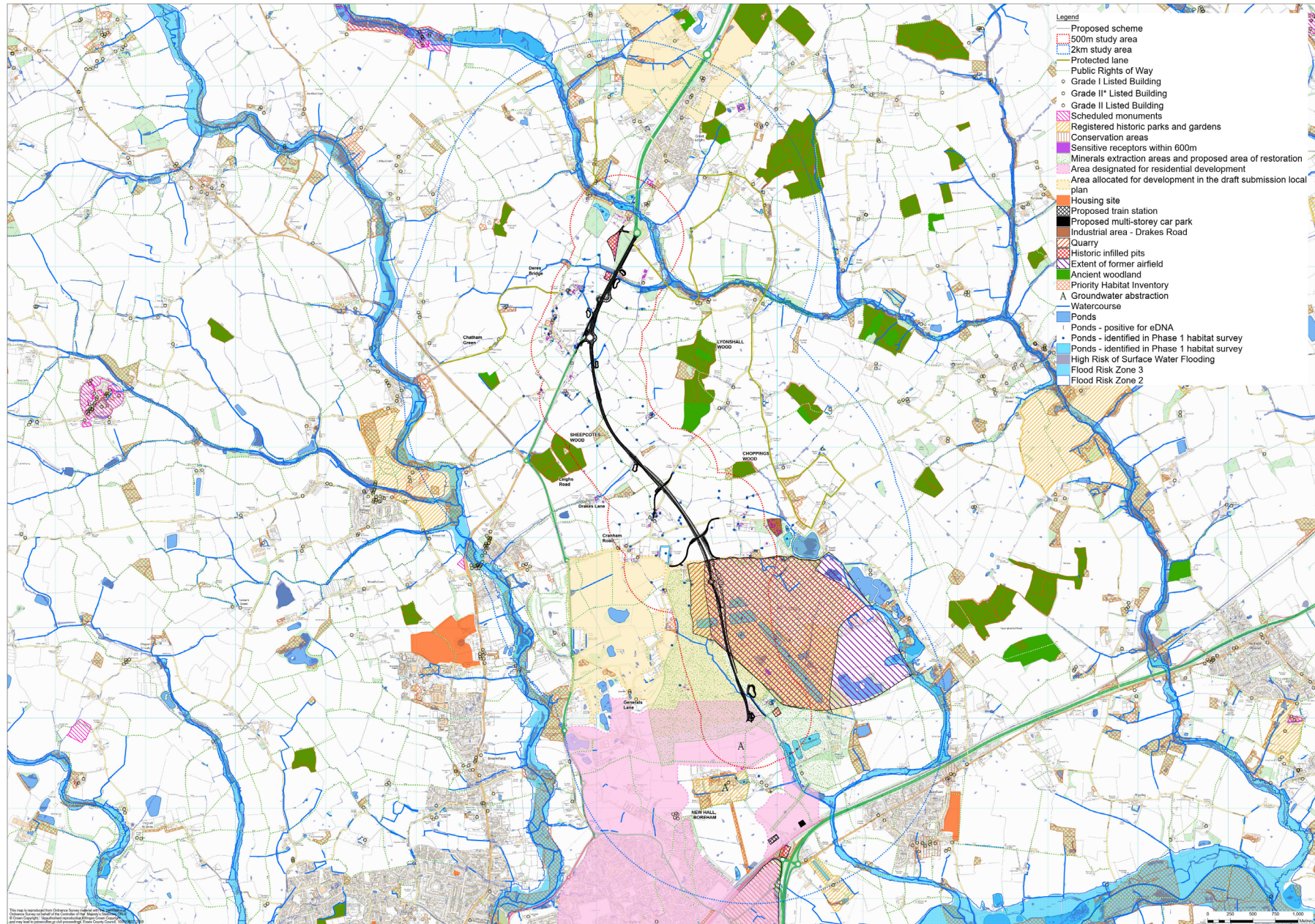


Chelmsford North East Bypass

Environmental
Mitigation and
Enhancement

- **Route alignment:**
Preferred bypass scheme avoids sensitive areas (e.g. Sheepcotes ancient woodland) and minimises land severance.
- **Sensitive scheme design:**
Scheme includes landscape planting, lighting and sound barriers to minimise visual, noise and negative ecological effects. Design will also include measures to ensure no additional flood risk to the area.
- **Considerate Constructors Scheme:**
The future construction will include traffic management, noise and dust control and phasing to minimise any potential disruption to the local community and road networks.

Map – Environmental factors





How to contact us

If you would like to contact us with any questions about the scheme or leave any feedback, please email

CNEB@essexhighways.org



More information can be found at:
www.essex.gov.uk/chelmsford-north-east-bypass

