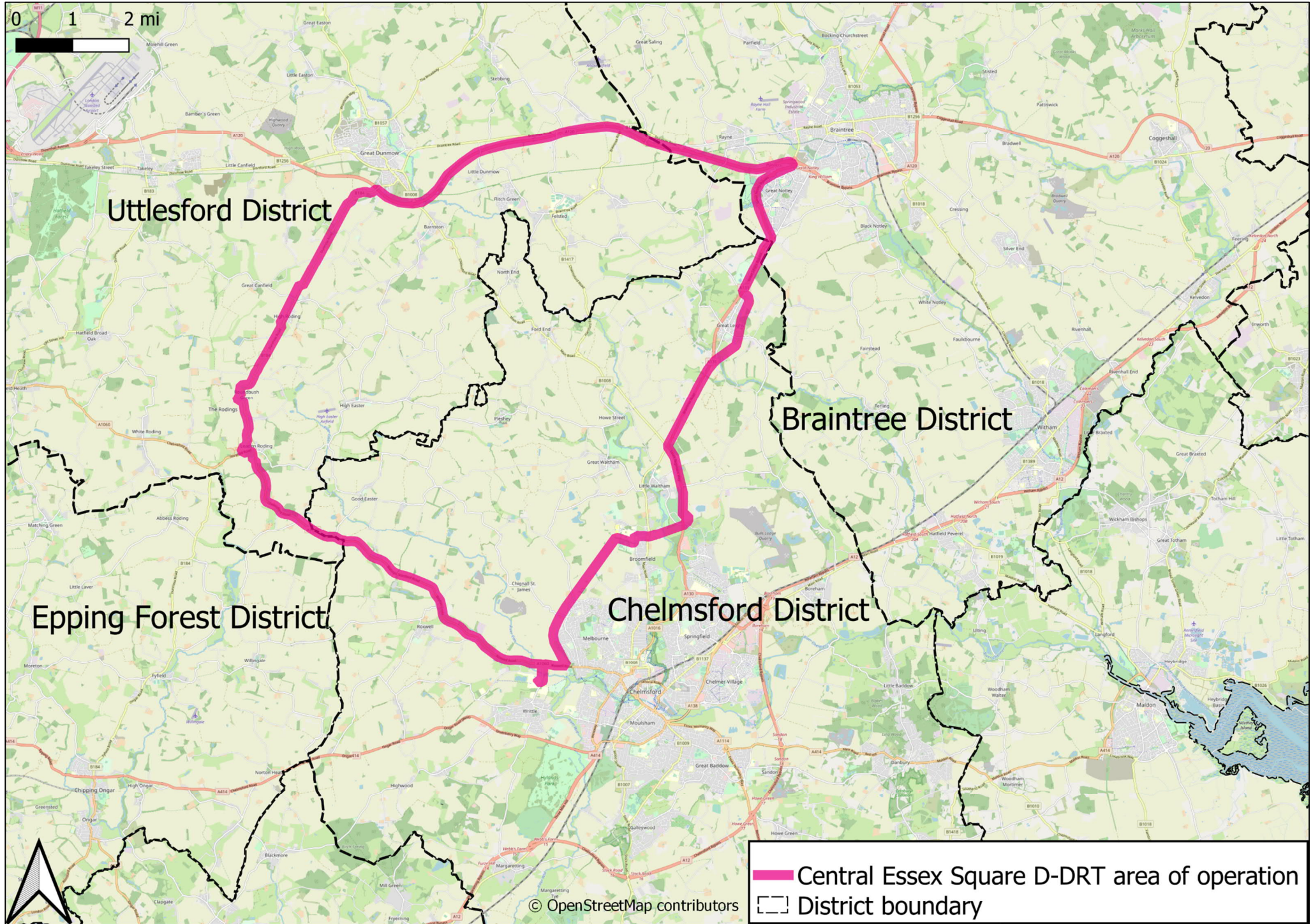
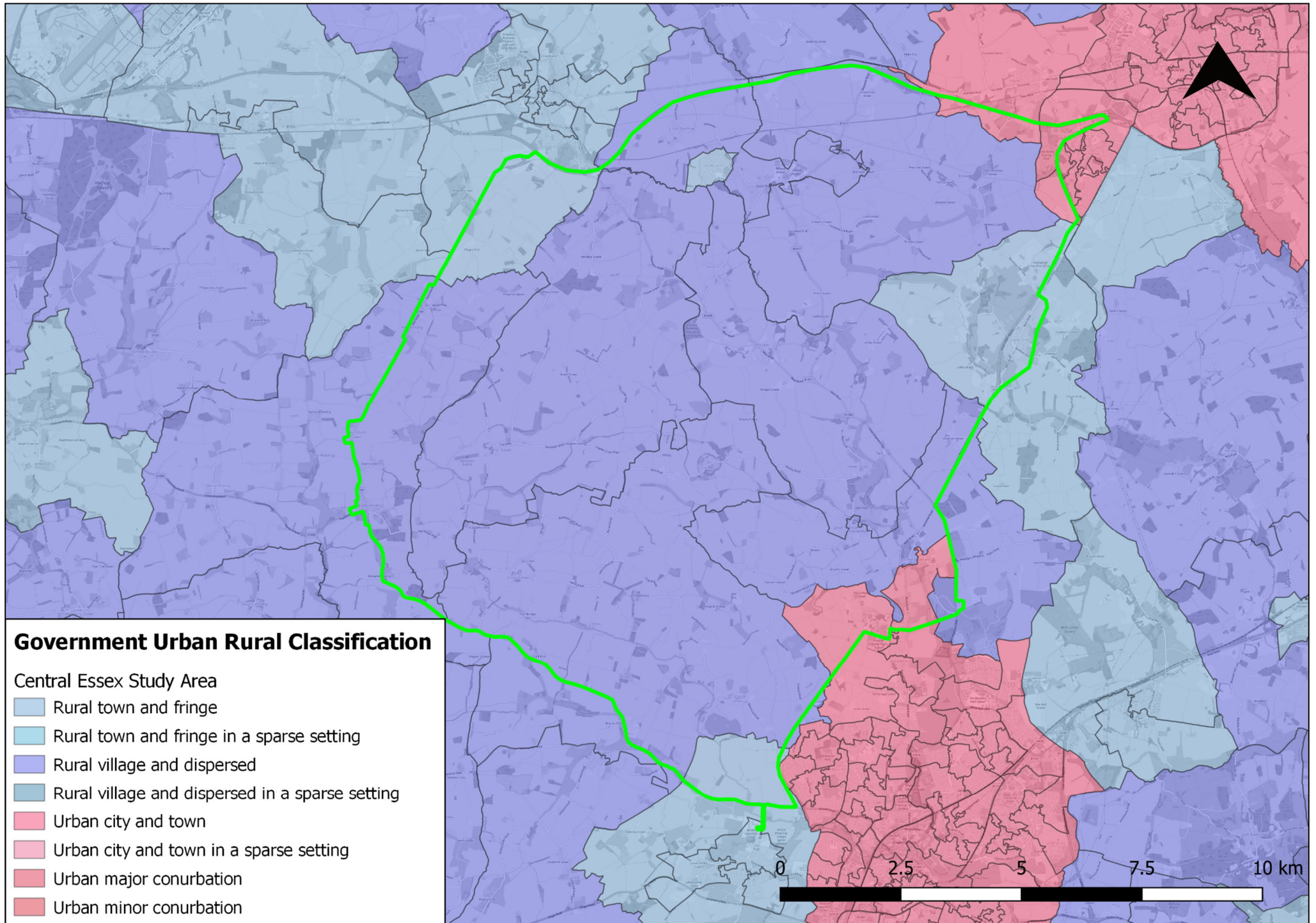


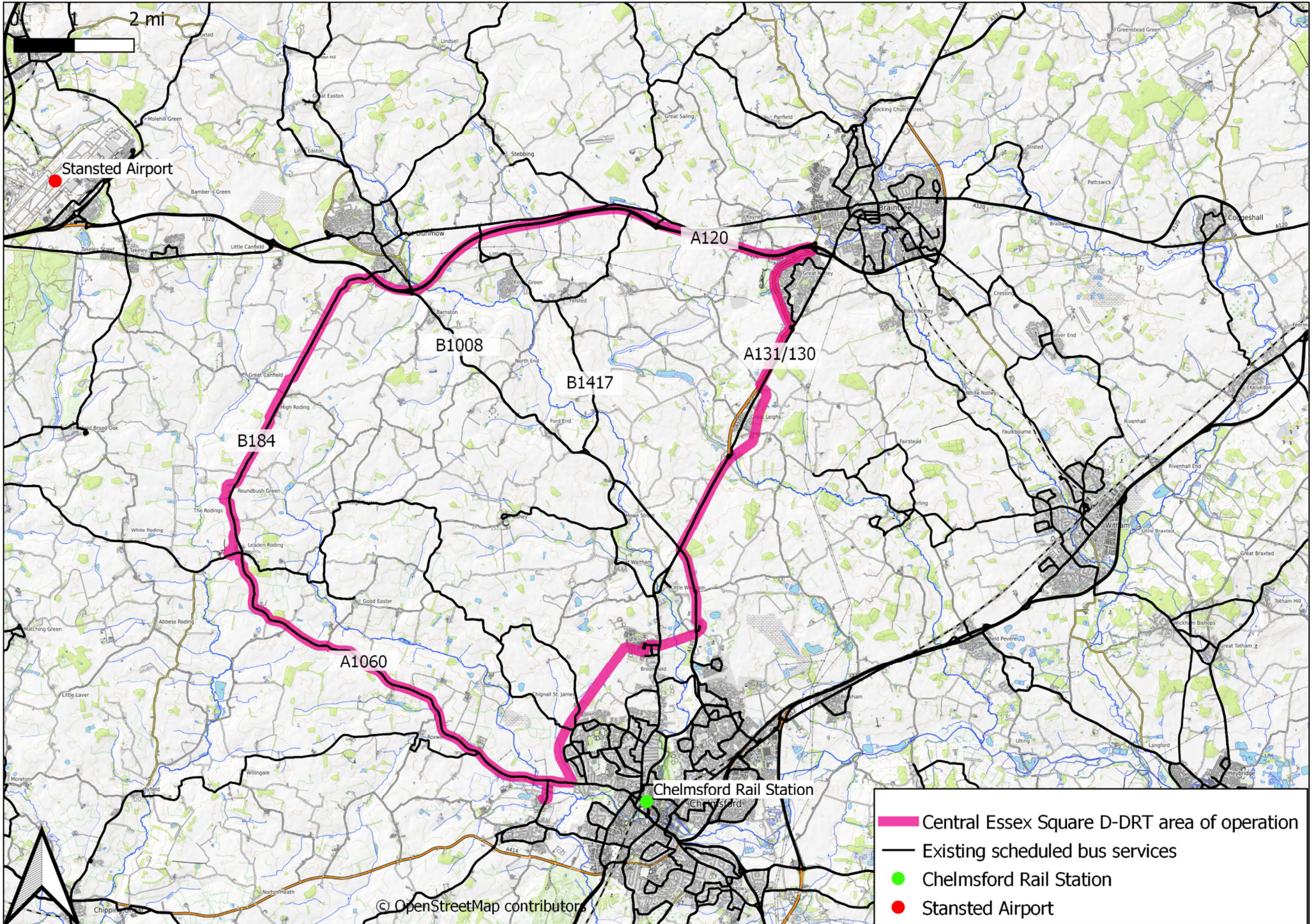
# Annex 1.1: Central Essex Square D-DRT location



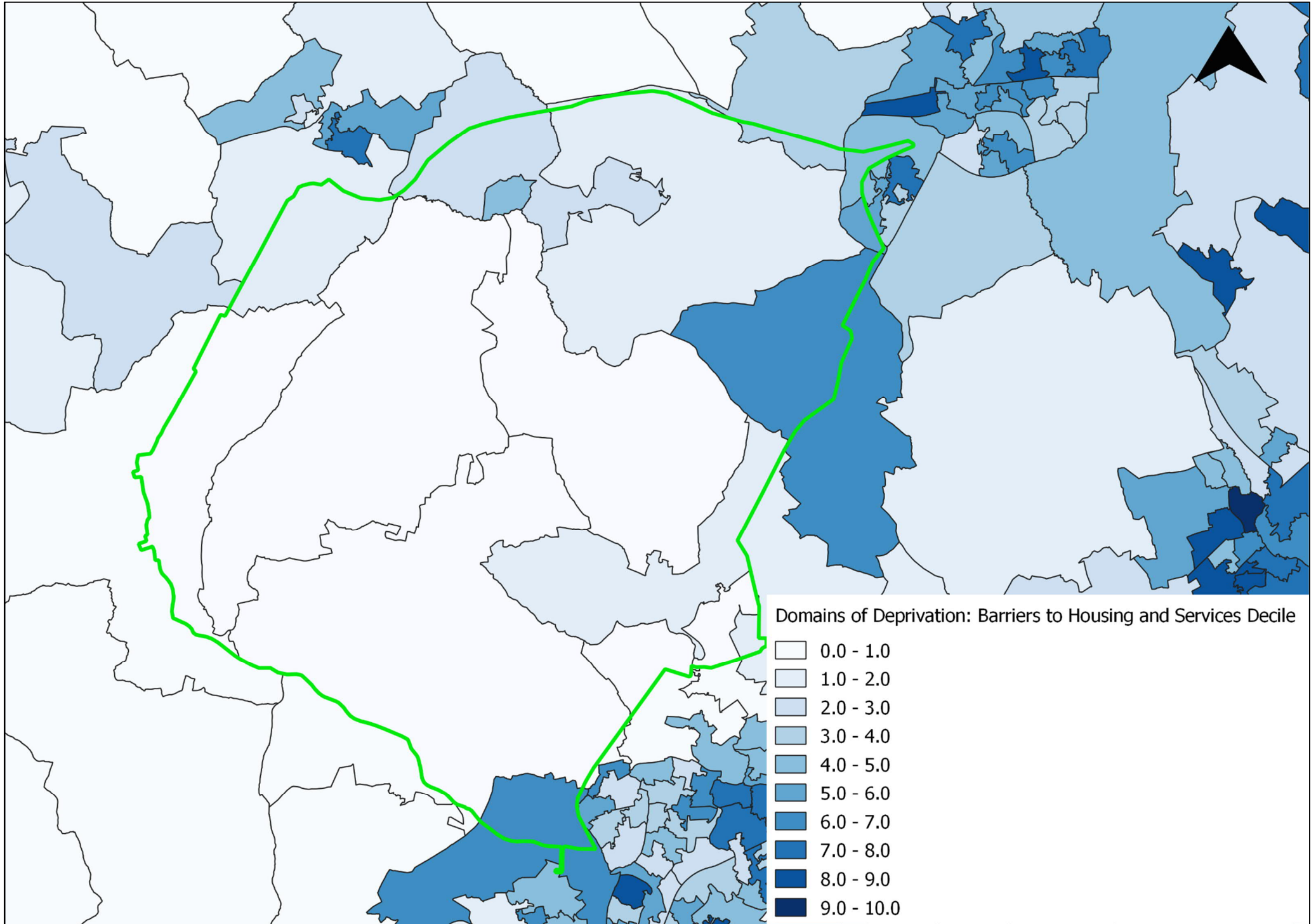
## Annex 1.2: Government Urban Rural classification (LSOAs)



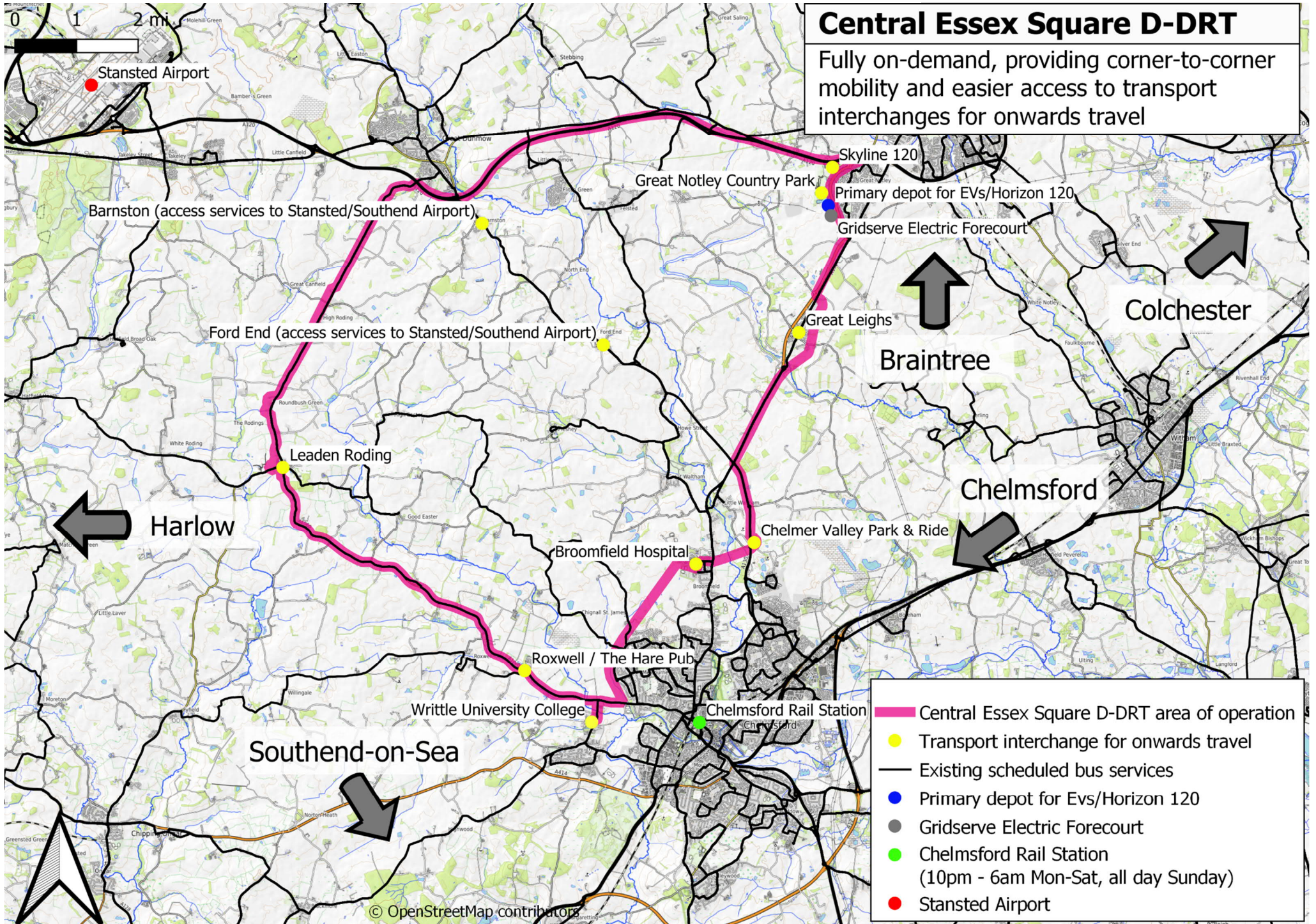
## Annex 2.2: Overview of existing public transport provision (Pre-Covid19)



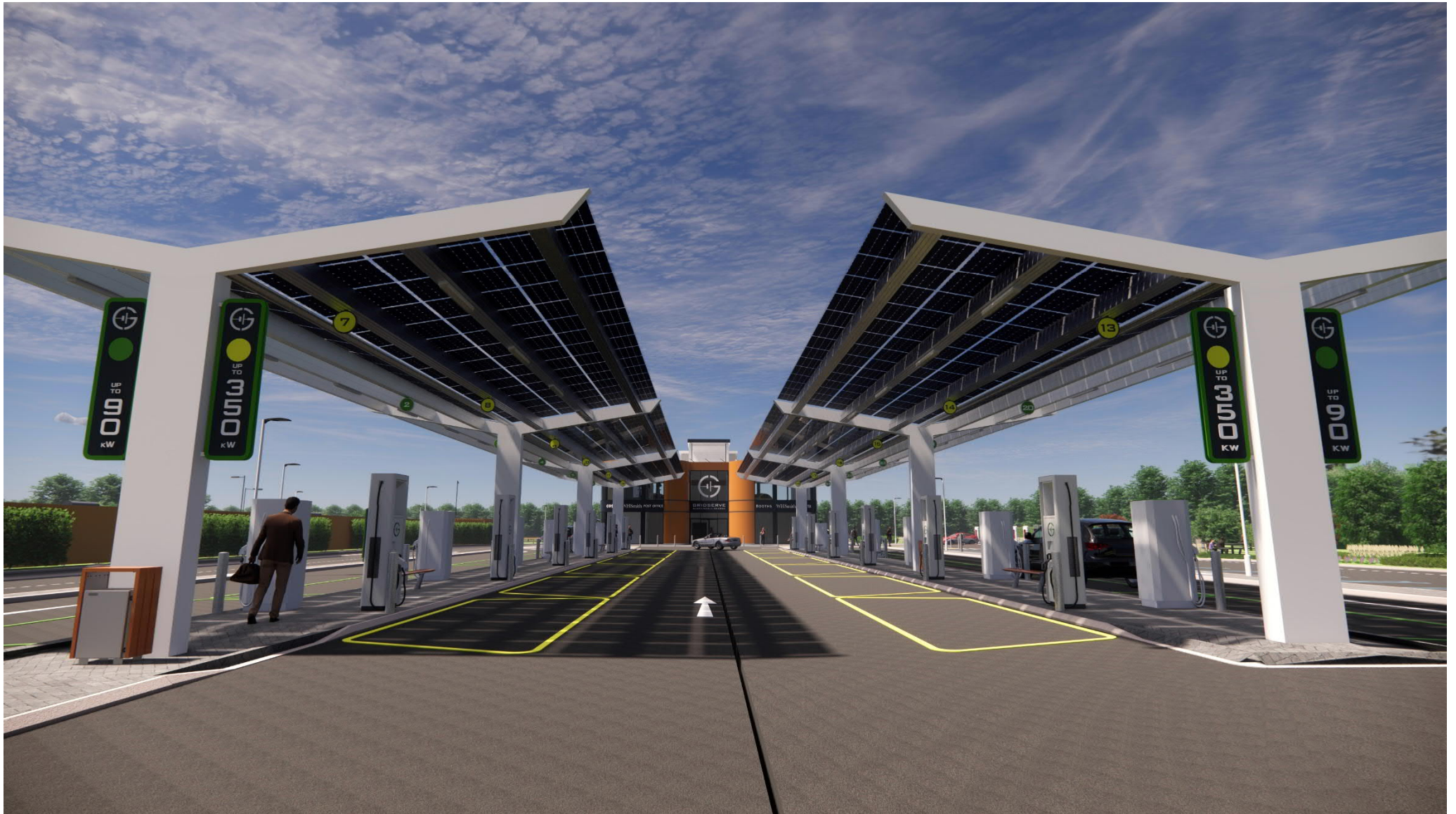
### Annex 3.1: Government Urban Rural classification (LSOAs)



## Annex 3.2: Proposed Solution



Annex 4.3: GRIDSERVE Electric Forecourt in Braintree (under construction)



**Annex 4.3 (continued): GRIDSERVE Electric Forecourt in Braintree (under construction)**



## **Annex 5: Letters of Support**

1. Uttlesford District Council
2. Chelmsford District Council
3. Braintree District Council
4. GRIDSERVE
5. Little Waltham Parish Council
6. Felsted Parish Council
7. High Easter Parish Council
8. Mid and South Essex NHS Trust (Broomfield Hospital)
9. Rural Community Council of Essex (RCCE)
10. Community Agents Essex
11. AVL
12. Anglia Ruskin University
13. Marshgate Developments Ltd