

# Project Completion Notification

## **PUBLIC BRIDLEWAY 239 BASILDON (part) SURFACE IMPROVEMENTS** **LBAS188001 - Bridleway 239 near Fern Walk, Langdon Hills, Basildon**

### **Scheme objective:**

Local Highways Panel have received request to improve the condition of a PROW which is used regularly by local residents (many aged) gaining access to the Woodland and Essex Wildlife site. The PROW is a Public Bridleway.

### **Scheme summary & outcome:**

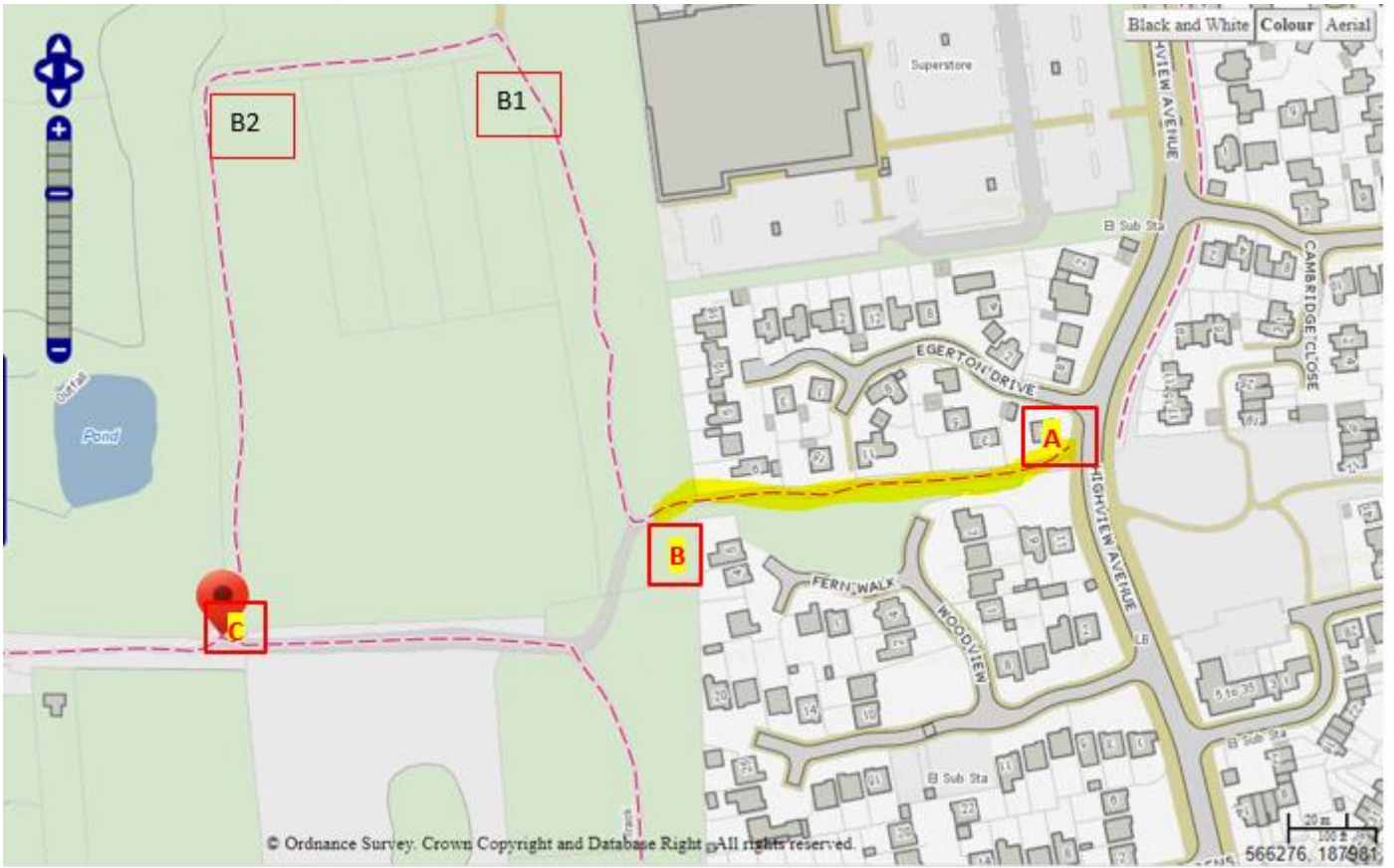
Basic Idea of the works required:

Part A); (A-B)

- Approximately 165m of strimming back and cutting back overhang to height of 4m to allow for a clear width of 2.2m width to allow users on horseback to travel along.
- Overlay of clean crushed road planinigs or similar MOT Type1 for a distance of 165m tied onto the current surface and compacted to a camber with an approximate depth of 40 to 50mm with a covering of granite/limestone dusting to a depth 20 to 10mm depth across a 2.2m width

Part B), (B-C)

- Approximately 520m of strimming back and cutting back overhang to height of 4m to allow for a clear width of 2.2m width to allow users on horseback to travel along (this was done in conjunction with Essex Wildlife Trust advice)
- Overlay of clean crushed road planinigs or similar MOT Type1 for a 195m distance tied onto the current surface and compacted to a camber with an approximate depth of 40 to 50mm with a covering of granite/limestone dusting to a depth 20 to 10mm depth over a width of 2.2m and then, overlay of clean crushed road planinigs or similar MOT Type1 for a 325m distance tied onto current surface and compacted to a camber with an approximate depth of 40 to 50mm with a covering of granite/limestone dusting to a depth 20 to 10mm depth over a width of 3.5m
- Between B1 and B2 the bridleway slopes and could be prone to erosion so material will need to be firmly compacted to allow for run off.



Site Photos:

**BEFORE**













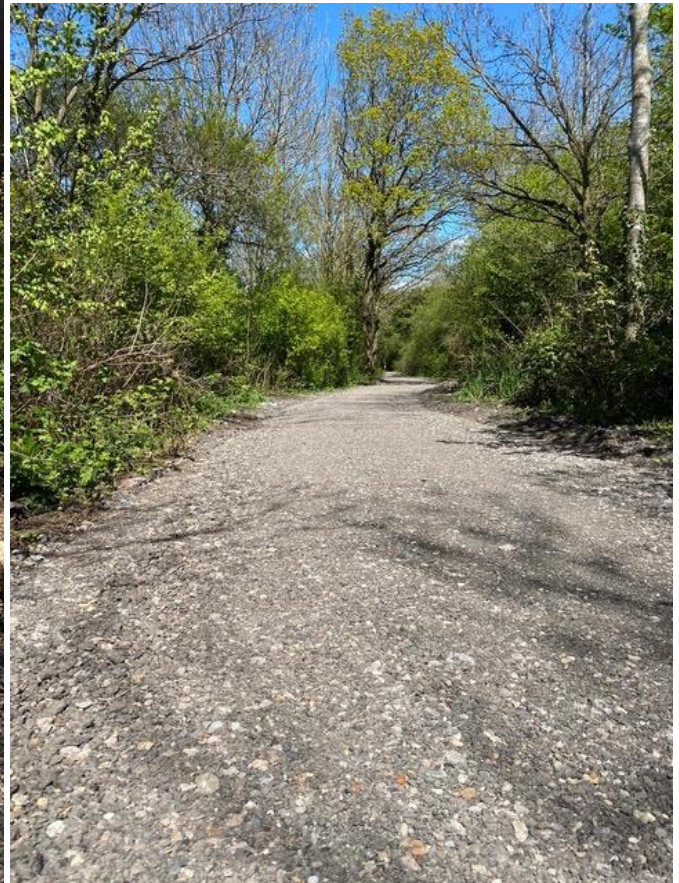
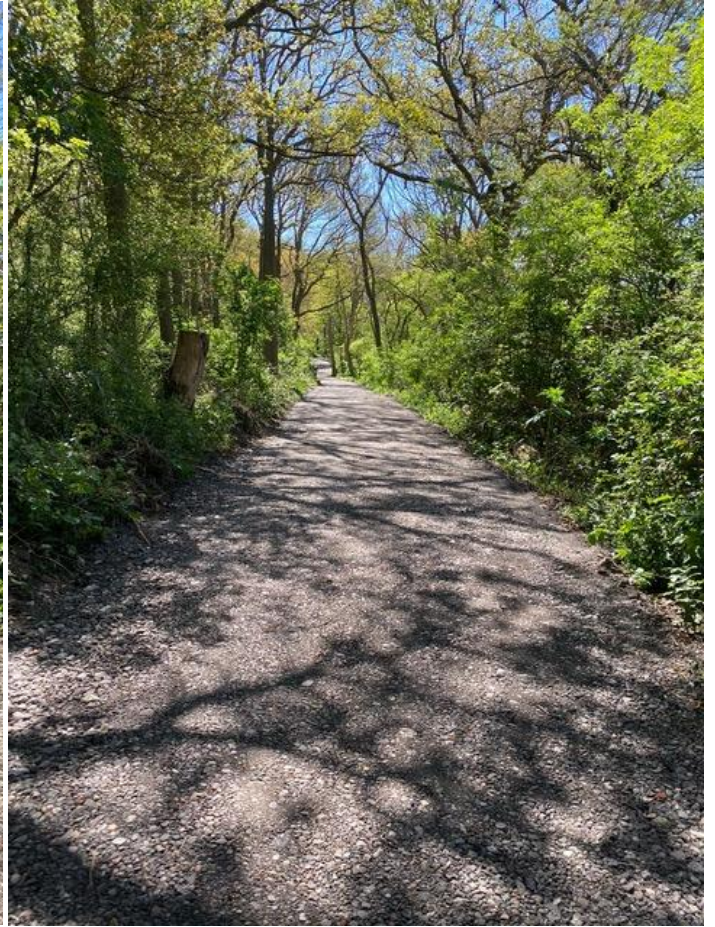




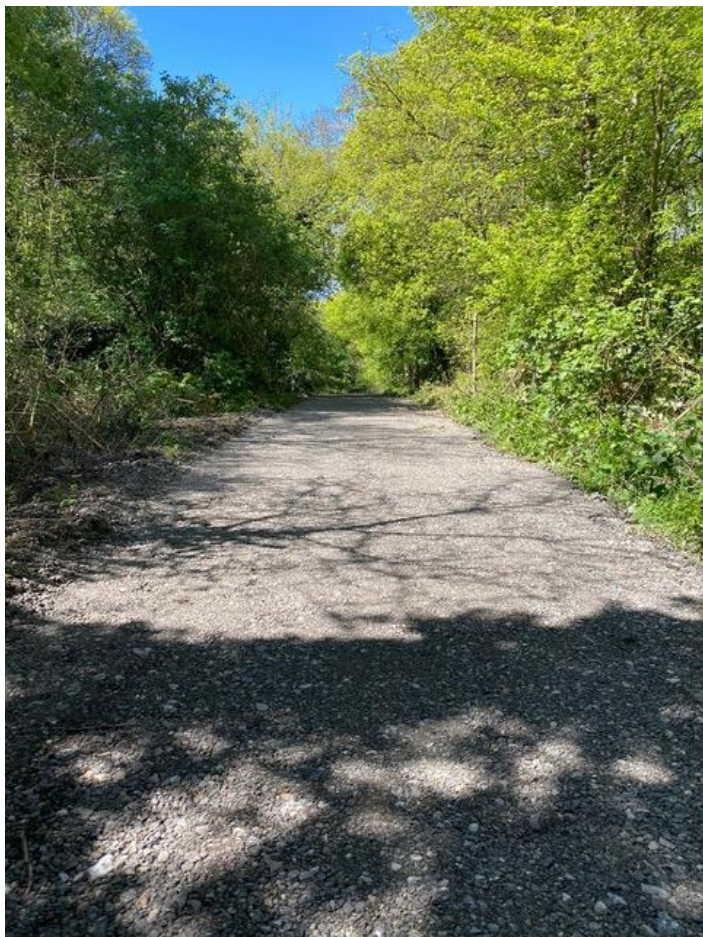
**AFTER**











### Works Approval

The below signs to agree that works have been completed as per the agreed specification.

Designers Comments:

Title: PROW Engineer	Date: 17/05/2021